

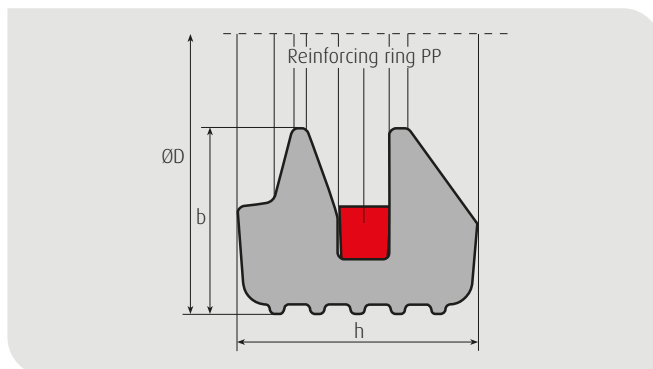
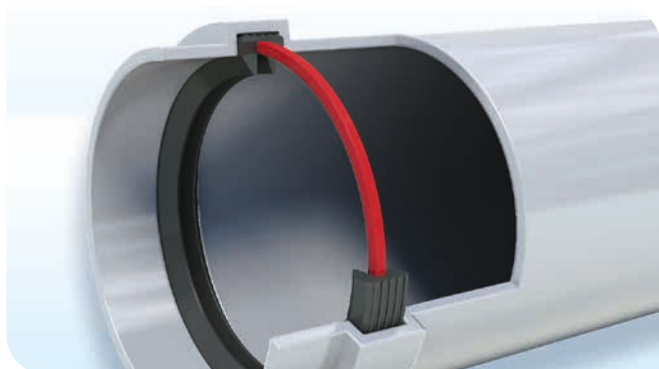
M|O|L

get flexibility



System DD

Lip-Seal-Ring | Ø 32 - 315 mm



Product description:

The SYSTEM DD lip seal ring with reinforcing ring (PP) is developed for plastic pipes and fittings made of PP and PVC in compliance with EN 1451-1 and EN 1401-1 and meets the requirements of EN 681-1 WC. The socket dimensions recommended by M.O.L. apply as well as for other pipe systems. The SYSTEM DD seal features two sealing lips which provide double safety. This is a decisive advantage in comparison to conventional single-lip systems, especially in the building sector. Another feature is the reinforcing ring which permits the use of a soft raw material compound and guarantees a firm fit in the socket. The soft rubber compound (SBR 40 ± 5 IRHD) presses into any rough surfaces on the pipe wall when the pipes are connected to ensure a high level of sealing reliability. In addition the softer lips ensure excellent connecting properties. A reinforcing ring of non-cracking polypropylene is fitted to provide sufficient stability for the SYSTEM DD seal in the socket. This prevents the seal being pushed out when the pipes are laid. The seal is mainly used for building applications (high-temperature resistance sewage pipes), but the SYSTEM DD seal can also be used for sewage pipes.

The advantages:

- The outstanding long-term elasticity of the rubber seal ensures a durable sealing effect
- The seal is not pushed out when the pipes are laid
- Use of the latest technologies guarantees an optimum cost-benefit ratio
- A long-term experience and monitored quality systems (including DIN ISO 9001:2008) guarantee the highest possible safety and reliability
- Firm fit in the socket
- Excellent connecting properties
- Available in a number of nominal widths (32 to 315 mm), some also available in two different widths
- External monitoring by the MPA-NRW/KIWA KOMO

Article No.	DN	DIAM	Ø D	b	h
60100	32 x 6	32	39,8 ± 0,5	4,6 ± 0,2	6,1 ± 0,2
60106	40 x 7	40	51,9 ± 0,5	6,7 ± 0,2	7,1 ± 0,2
60107	40 x 8	40	51,9 ± 0,5	6,7 ± 0,2	8,1 ± 0,2
60108	50 x 7	50	61,9 ± 0,5	6,7 ± 0,2	7,1 ± 0,2
60110	50 x 8	50	61,9 ± 0,5	6,7 ± 0,2	8,1 ± 0,2
60130	63 x 8	63	75,5 ± 0,6	7,0 ± 0,2	8,5 ± 0,2
60111	70 x 7	75	86,9 ± 0,6	6,7 ± 0,2	7,1 ± 0,2
60112	70 x 8	75	86,9 ± 0,6	6,7 ± 0,2	8,1 ± 0,2
60113		90	101,3 ± 0,6	7,3 ± 0,3	8,8 ± 0,2
60114		100	113,2 ± 0,5	7,8 ± 0,3	9,1 ± 0,2
60116	100 x 9	110	123,2 ± 0,7	7,8 ± 0,3	9,1 ± 0,2
60117	100 x 10	110	123,2 ± 0,7	7,8 ± 0,3	10,1 ± 0,3
60121	125 x 10	125	140,2 ± 0,8	8,6 ± 0,3	10,3 ± 0,3
60123	150 x 11	160	177,2 ± 0,8	10,2 ± 0,3	11,5 ± 0,3
60124	150 x 13	160	177,7 ± 0,8	10,0 ± 0,3	13,1 ± 0,3
60125	200 x 13	200	218,0 ± 1,0	11,0 ± 0,3	13,1 ± 0,3
60128		9 inch	268,0 ± 1,8	13,8 ± 0,4	16,3 ± 0,4
60126	250 x 21	250	277,0 ± 2,0	16,4 ± 0,4	21,0 ± 0,6
60127	300 x 22	315	343,0 ± 2,0	17,7 ± 0,4	22,5 ± 0,6



Subject to technical modifications. With regard to the material properties given in the tables and diagrams we only guarantee the figures required by the relevant standards. Our product information is supplied to the best of our knowledge. However, we do not accept any legal liability for the contents. Our General Terms and Conditions of Sale are available online at www.mol-elastomer.de.