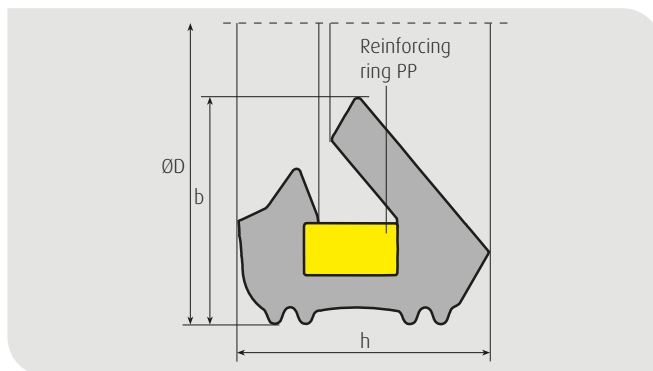
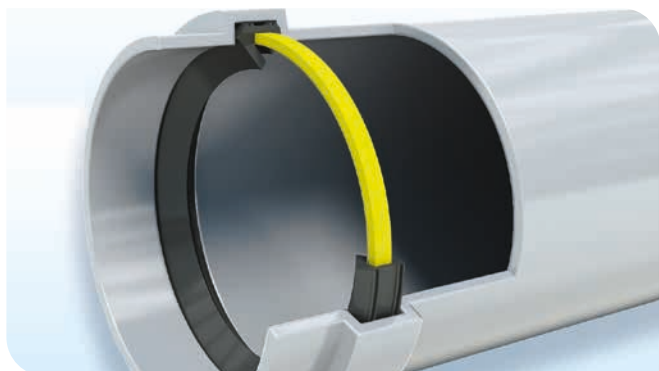


M|O|L
get flexibility



System SK

Lip-Seal-Ring | Ø 110 - 630 mm



Product description:

The SYSTEM SK lip seal ring with reinforcing ring (PP) is developed for plastic pipes and fittings in compliance with EN 1451-1 (DIN 19560) and EN 1401-1 (DIN 19531/DIN 19534). The socket dimensions recommended by M.O.L. apply as well as for other pipe systems. SYSTEM SK seals have outstanding properties and meet the requirements of DIN-EN 681-1 WC. The quality is regularly monitored by: MPA NRW Dortmund, KIWA KOMO.

The advantages:

- High-quality EPDM with excellent rubber properties to EN 681-1
- Lip seal ring with reinforcing ring (PP)
- Integral seal with firm fit of the sealing ring in the socket
- Excellent connecting properties, the connection forces are very low, even non-chamfered pipes can be connected easily
- The leak tightness required by EN 1277 under positive and negative pressure is exceeded by far
- The seal is not pushed out when the pipes are laid
- The outstanding elasticity of the rubber seal ensures a durable sealing effect
- External monitoring by the MPA-NRW/KIWA KOMO

Article No.	DN	DIAM	Ø D	b	h
60649	100 S	110	122,8 ± 0,7	8,5 ± 0,3	9,8 ± 0,3
60650	100 B	110	122,8 ± 0,7	8,9 ± 0,3	10,5 ± 0,3
60651	125	125	139,6 ± 0,8	9,9 ± 0,3	11,2 ± 0,3
60652	150	160	176,4 ± 0,9	11,3 ± 0,4	12,6 ± 0,4
60653	200	200	218,5 ± 1,0	12,8 ± 0,4	14,0 ± 0,4
60654	250	250	276,2 ± 1,0	19,6 ± 0,6	21,5 ± 0,5
60655	300	315	342,8 ± 2,4	20,6 ± 0,6	22,9 ± 0,5
60656	400	400	431,4 ± 3,0	23,4 ± 0,8	26,6 ± 0,8
60657	500	500	538,2 ± 3,5	28,6 ± 1,0	32,9 ± 1,0
60658	600	630	675,3 ± 4,0	34,1 ± 1,2	37,9 ± 1,2



Subject to technical modifications. With regard to the material properties given in the tables and diagrams we only guarantee the figures required by the relevant standards. Our product information is supplied to the best of our knowledge. However, we do not accept any legal liability for the contents. Our General Terms and Conditions of Sale are available online at www.mol-elastomer.de.