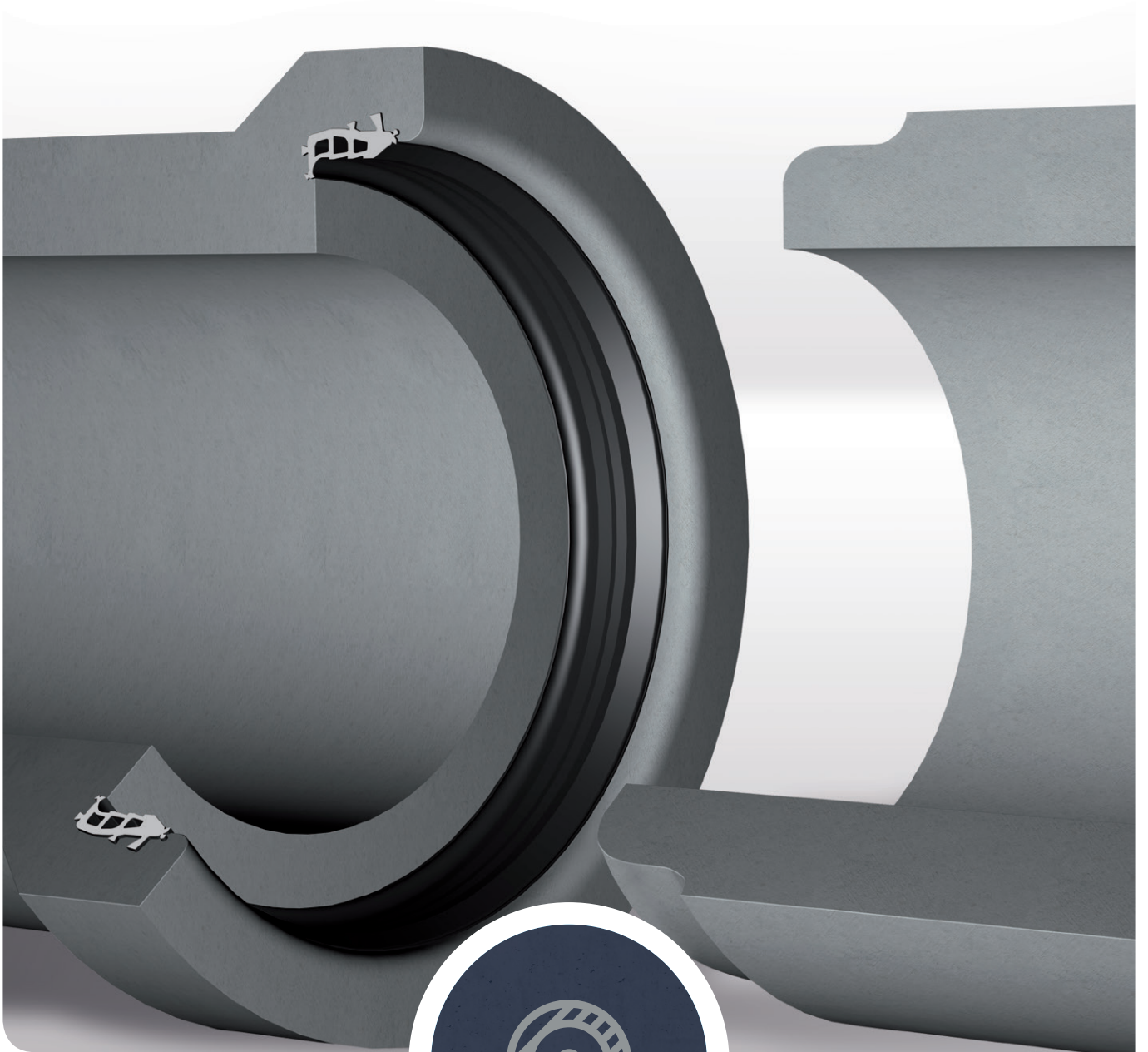


M|O|L
get flexibility

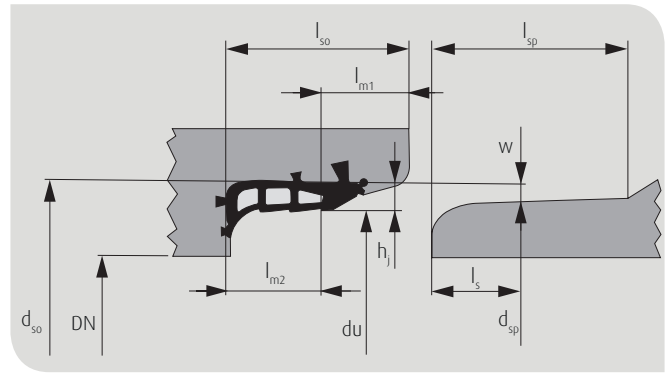
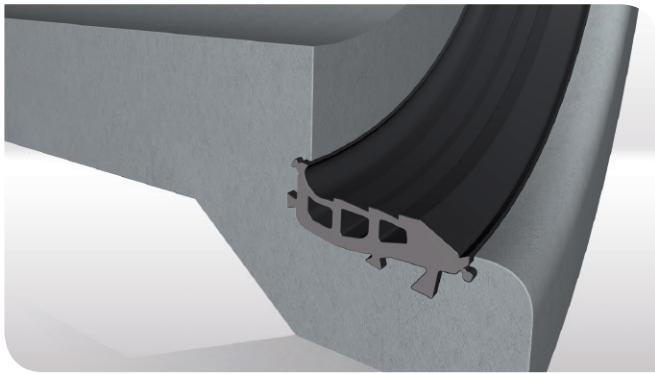


Seals for concrete pipes



INTEGRA

for concrete pipes | Ø 300 - 2600 mm



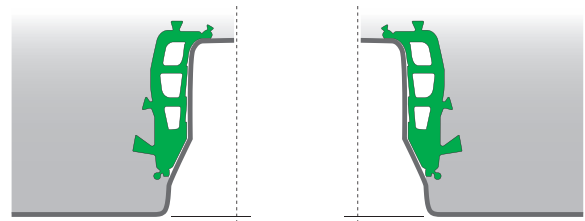
The M.O.L. INTEGRA concrete pipe seal is integrated into the socket and guarantees a firm, reliable connection between concrete pipes and reinforced concrete pipes in compliance with DIN EN 1916. In addition the INTEGRA seal meets the requirements of EN 681-1 and the FBS quality guideline QR 4060®.

Material: The seal is made of SBR (styrene-butadiene rubber) which is ideal for use in sewage systems and complies with the requirements of the DIN EN 681-1 WC 50 standard (Hardness 50 ± 5 IRHD). **Our INTEGRA seal is tested and inspected for quality by MPA NRW (Dortmund) and KIWA Netherlands.**

Pipe manufacture: Fit the INTEGRA seal onto the cleaned base ring. The base ring should be lightly lubricated. Fill the socket with concrete and then start sealing. Subsequently cast the concrete pipe in the customary manner. After removing the pipe from the form, place the outer and inner support ring onto the spigot and remove

from the form with the base ring when the concrete has set. When the concrete has fully set, the spigot and socket pipe with the INTEGRA seal is ready for use.

Note for pipe installation: Before joining the pipes, grease the spigot and seal thoroughly with a suitable lubricant (also available from M.O.L.). Centre and insert the spigot into the socket and pull the pipes together.



| DN | h _i | w | du | Tolerance du | d _{so} | l _{so} | l _{m1} | l _{m2} | d _{sp} | Tolerance d _{sp} | l _{sp} | l _s |
|---------|----------------|------|----------|--------------|-----------------|-----------------|-----------------|-----------------|-----------------|---------------------------|-----------------|----------------|
| 300 N | Integra 12 | 7,8 | 377,6 | ± 0,3 | 401,6 | 80 | 36,5 | 43,5 | 386 | ± 1,8 | 85 | 39 |
| 300 S | INTEGRA 12 | 7,8 | 395,6 | ± 0,3 | 419,6 | 80 | 36,5 | 43,5 | 404 | ± 1,8 | 85 | 39 |
| 400 N | INTEGRA 14 | 9,1 | 486,2 | ± 0,3 | 514,2 | 85 | 36 | 49 | 496 | ± 2,2 | 90 | 43 |
| 400 S | INTEGRA 14 | 9,1 | 495,5 | ± 0,3 | 523,5 | 85 | 36 | 49 | 505,3 | ± 2,2 | 90 | 43 |
| 500 | INTEGRA 14 | 9,1 | 600,2 | ± 0,3 | 628,2 | 90 | 41 | 49 | 610 | ± 2,2 | 95 | 43 |
| 600 | INTEGRA 14 | 9,1 | 716,2 | ± 0,3 | 744,2 | 90 | 41 | 49 | 726 | ± 2,2 | 95 | 43 |
| 700 | INTEGRA 18 | 11,7 | 831,4 | ± 0,6 | 867,4 | 100 | 45,6 | 54,4 | 844 | ± 2,4 | 105 | 47 |
| 800 | INTEGRA 18 | 11,7 | 949,4 | ± 0,6 | 985,4 | 100 | 45,6 | 54,4 | 962 | ± 2,4 | 105 | 47 |
| 900 | INTEGRA 18 | 11,7 | 1067,4 | ± 0,6 | 1103,4 | 100 | 45,6 | 54,4 | 1080 | ± 2,4 | 105 | 47 |
| 1000 | INTEGRA 18 | 11,7 | 1185,4 | ± 0,6 | 1221,4 | 100 | 45,6 | 54,4 | 1198 | ± 2,4 | 105 | 47 |
| 1100 | INTEGRA 18 | 11,7 | 1303,4 | ± 0,6 | 1339,4 | 100 | 45,6 | 54,4 | 1316 | ± 2,4 | 105 | 47 |
| 1200 | INTEGRA 18 | 11,7 | 1421,4 | ± 0,6 | 1457,4 | 100 | 45,6 | 54,4 | 1434 | ± 2,4 | 105 | 47 |
| 1300 | INTEGRA 22 | 14,3 | 1536,6 | ± 0,7 | 1580,6 | 125 | 58 | 67 | 1552 | ± 3,0 | 130 | 58 |
| 1400 | INTEGRA 22 | 14,3 | 1654,6 | ± 0,7 | 1698,6 | 125 | 58 | 67 | 1670 | ± 3,0 | 130 | 58 |
| 1500 | INTEGRA 22 | 14,3 | 1772,6 | ± 0,7 | 1816,6 | 125 | 58 | 67 | 1788 | ± 3,0 | 130 | 58 |
| ab 1600 | INTEGRA 26 | 16,9 | variabel | ± 0,8 | variabel | 145 | 65 | 80 | variabel | ± 3,6 | 150 | 69 |

Other profiles upon request (all dimensions in mm).

With regard to the material properties given in the tables and diagrams we only guarantee the figures required by the relevant standards. Our product information is supplied to the best of our knowledge. However, we do not accept any legal liability for the contents. Our General Terms and Conditions of Sale are available online at www.mol-elastomer.de.

