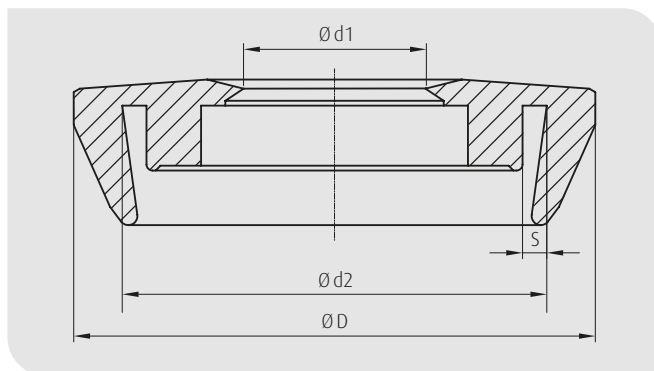
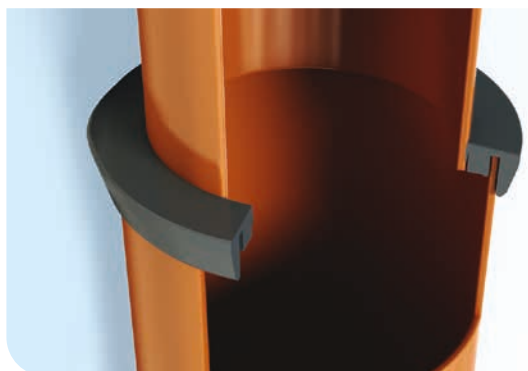


M|O|L
get flexibility



Telescopic collar

Safe connection between the riser and telescopic pipe

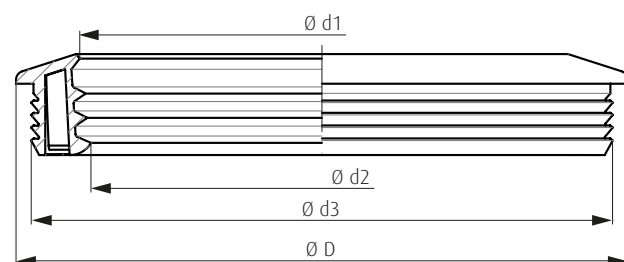
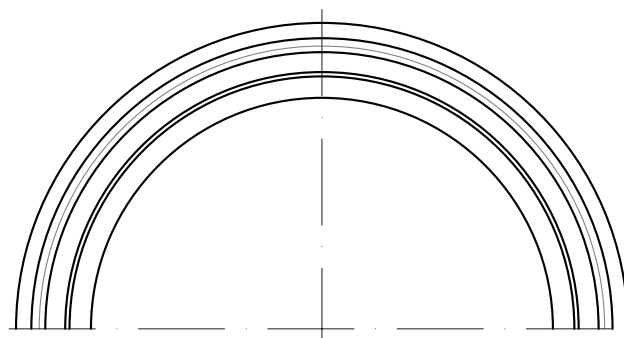


Standard version:

The telescopic collar serves as a connector between the riser and the telescopic pipe. It is easy to fit and is also available with an embossed customer logo. The telescopic collar is available for smooth and corrugated risers made of PVE (EN 1401-1), PE or PP. The gap dimension is the determining factor. The employed raw material is SBR 60 Shore \pm 5 IRHD in compliance with EN 681-1.

Lip telescopic collar:

The lip telescopic collar is used for the same applications as the standard version. The lips provide a seal between the riser and the telescopic pipe and the telescopic function is not affected.



The advantages:

- Connection between the riser and telescopic pipe
- Simple and fast installation
- For smooth and corrugated risers
- Also available with embossed customer logo
- Raw material: SBR 60 Shore \pm 5 IRHD in compliance with EN 681-1
- For risers made of (EN 1401-1), PE or PP

Article No.	DIAM	Ø D	Ø d1	Ø d2	s
Standard version					
60220	160/200	213,0	147,0	199,0	5,0
60228	250/315	328,6	237,0	312,6	6,5
60221	315/400	419,0	300,0	398,0	10,0
60237	315/400	419,0	300,0	398,0	14,7
62246	315/400	419,0	300,0	401,0	25,5

Article No.	DIAM	Ø D	Ø d1	Ø d2	Ø d3
Lip telescopic collar					
60233	315/335	385,0	319,0	309,0	343,5
60251	315/345	385,0	315,0	307,0	355,0
60252	315/400	403,0	319,0	304,4	383,0



Subject to technical modifications. With regard to the material properties given in the tables and diagrams we only guarantee the figures required by the relevant standards. Our product information is supplied to the best of our knowledge. However, we do not accept any legal liability for the contents. Our General Terms and Conditions of Sale are available online at www.mol-elastomer.de.